

Please join us
for our seventh Annual
Golf Tournament!

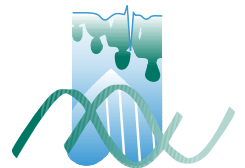
Friday, June 8, 2007
Mount Pleasant Country Club



The Herbert H. and Grace A. Dow
College of Health Professions



The Herbert H. and Grace A. Dow
College of Health Professions
Health Professions 2215
Central Michigan University
Mount Pleasant, MI 48859



Non-Profit Organization
U.S. POSTAGE
PAID
Mt. Pleasant, MI 48859
Permit No. 93

Sponsorship Opportunities

Nicklaus Level

- ♦ A minimum contribution of **\$1,000** to receive golf for a 4-person team in the event, a designated dining table and product / informational display at the luncheon, printed recognition on the rules sheet, and a banner display on a hole during the event. (*\$800 will be recognized as tax-deductible*)

Palmer Level

- ♦ A minimum contribution of **\$500** to receive golf for two (2) players in the event, printed recognition on the rules sheet, and a banner display on a hole during the event. (*\$400 will be recognized as tax-deductible*)

Zaharias Level

- ♦ A minimum contribution of **\$250** to receive a banner display on the beverage carts during the event. (*\$250 will be recognized as tax-deductible*)

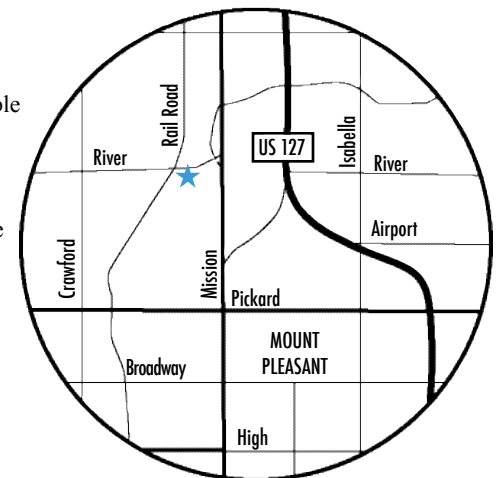
Hogan Level

- ♦ A minimum contribution of **\$100** to receive a banner display on a hole during the event. (*\$100 will be recognized as tax-deductible*)

Snead Level

- ♦ A minimum contribution of **\$50** to receive recognition on a "Wall of Friends" display during the luncheon. (*\$50 will be recognized as tax-deductible*)

If you are interested in becoming a sponsor or donating raffle prizes, please complete the enclosed registration form or call The Herbert H. and Grace A. Dow College of Health Professions at (989) 774-1731.



★ Mount Pleasant Country Club

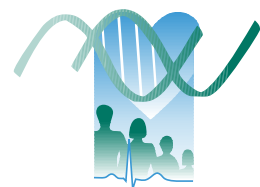
For more information on
Mount Pleasant Country Club,
please visit www.mountpleasantcc.com

Please join us for the seventh Annual Golf Tournament!

Friday, June 8, 2007 at Mount Pleasant Country Club

Our agenda for the day is:

- ♦ 8:00 a.m. - Check in and registration, continental breakfast
- ♦ 8:30 a.m. - Shotgun start, 4 person scramble, 18 holes
- ♦ 1:30 p.m. (or shortly after) - Lunch and prizes awarded, silent and live auctions



The Herbert H. and Grace A. Dow College of Health Professions

There will be course contests, opportunities to purchase mulligans or reloads, and a special gift for all players. All monies generated from this event will be applied toward the Student Emergency Fund. The Student Emergency Fund will assist students who are facing a financial crisis that would prevent them from continuing their education.

Should you have any questions prior to the outing, please call Melodie Anderson at 989.774.1731 or send an e-mail to ander2ma@cmich.edu.



To register, please return the Registration Form no later than June 1, 2007.

Please mail the Registration Form to:

The Herbert H. and Grace A. Dow College of Health Professions
Health Professions 2215
Central Michigan University
Mount Pleasant, MI 48859

Limited to first 20 teams!

We welcome single golfers and will gladly assign you to a foursome.

You may also fax your form to 989.774.1853.

CMU, an AA/EQ institution, strongly and actively strives to increase diversity within its community (see www.cmich.edu/aaee). Individuals with disabilities who need an accommodation should call 989.774.6661 at least one week before the event.

Registration Form

Please fill out completely.
Include phone number for Team Captain.

Team Captain's Name _____

Address _____

City _____ State _____ ZIP _____

Daytime Phone (_____) _____

E-mail _____

Name _____

Address _____

City _____ State _____ ZIP _____

Name _____

Address _____

City _____ State _____ ZIP _____

Name _____

Address _____

City _____ State _____ ZIP _____

GOLF, BREAKFAST & LUNCH PACKAGE

_____ x \$75 per person = \$_____ (\$25 tax-deductible per person)
(number)

SPONSORSHIP

- Nicklaus Level** - \$1,000 (\$800 will be recognized as tax-deductible)
Golf for a 4-person team in the event, a designated dining table and product / informational display at the luncheon, printed recognition on the rules sheet, and a banner display on a hole during the event.
- Palmer Level** - \$500 (\$400 will be recognized as tax-deductible)
Golf for two (2) players in the event, printed recognition on the rules sheet, and a banner display on a hole during the event.
- Zaharias Level** - \$250 (\$250 will be recognized as tax-deductible)
A banner display on the beverage carts during the event.
- Hogan Level** - \$100 (\$100 will be recognized as tax-deductible)
A banner display on a hole during the event.
- Snead Level** - \$50 (\$50 will be recognized as tax-deductible)
Recognition on a "Wall of Friends" display during the luncheon.
- Raffle Prize(s)** - Please briefly describe item(s): _____

Contact Name: _____

Contact Phone Number(_____) _____ E-mail: _____

AMOUNT DUE \$ _____

PAYMENT OPTIONS Make checks payable to Central Michigan University. If you prefer to use one of the credit cards below, please circle the card you are using and provide all required information.



Card Number _____ Exp. Date _____

Signature _____

We look forward to seeing you!